



mobile made easy.

TRACK INVENTORY WITH EFFICIENCY THAT IS SUSTAINABLE



SMART Inventory Manager

Syclo's mobile inventory management solution is preintegrated with leading back-end systems for fast, seamless deployment. With SMART Inventory Manager, organizations can control costs and avoid stockouts while significantly minimizing human error. The software speeds ongoing cycle counts and tracks issued parts by part number, storeroom location, bin number and work order.

SMART Inventory Manager replaces inefficient paperwork and automates inventory management by enabling storeroom and receiving teams to efficiently and accurately complete cycle counts, review and distribute incoming material by purchase orders, and speed part and tool issues and transfers. By extending data from your EAM the system to employees via mobile devices, SMART Inventory Manager increases productivity, controls inventory costs and ensures accurate cycle counts to avoid costly stockouts.

BUSINESS BENEFITS

- Know precise inventory levels.
- Automate cycle counts and increase accuracy.
- Speed issues, transfers and returns of spare parts and tools.
- Instantly reconcile purchase orders and receipts.

INCREASE PRODUCTIVITY IN THE STOREROOM AND BEYOND

Automate cycle counts and inventory tracking to eliminate time-consuming paperwork and human errors. Speed part and tool issues to reduce technicians' wait time.

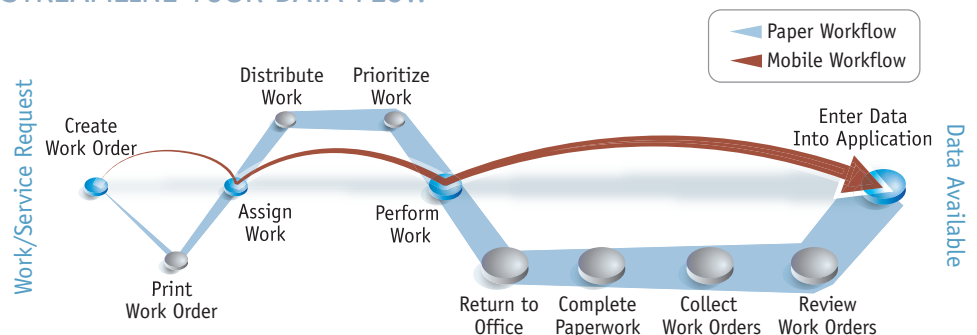
CONTROL COSTS AND IMPROVE INVENTORY PROCESSES

Generate real-time inventory updates to put the most current information in management's hands — improving decision making and planning. Speed receipts and back-order reporting to and from shipping and receiving departments.

IMPROVE TRACKING ACCURACY FOR JUST-IN-TIME INVENTORY

Track and monitor bin levels more efficiently to implement just-in-time inventory and reduce stockout hassles, shrinkage, spoilage and overstock. Use mobile technology to record stock issues and keep inventory data timely and accurate.

STREAMLINE YOUR DATA FLOW



The SMART Mobile Suite of out-of-the-box solutions enables your organization to quickly reach a new level of efficiency — significantly affecting the bottom line and lowering the total cost of ownership.

FEATURES AND FUNCTIONS

Cycle Counts

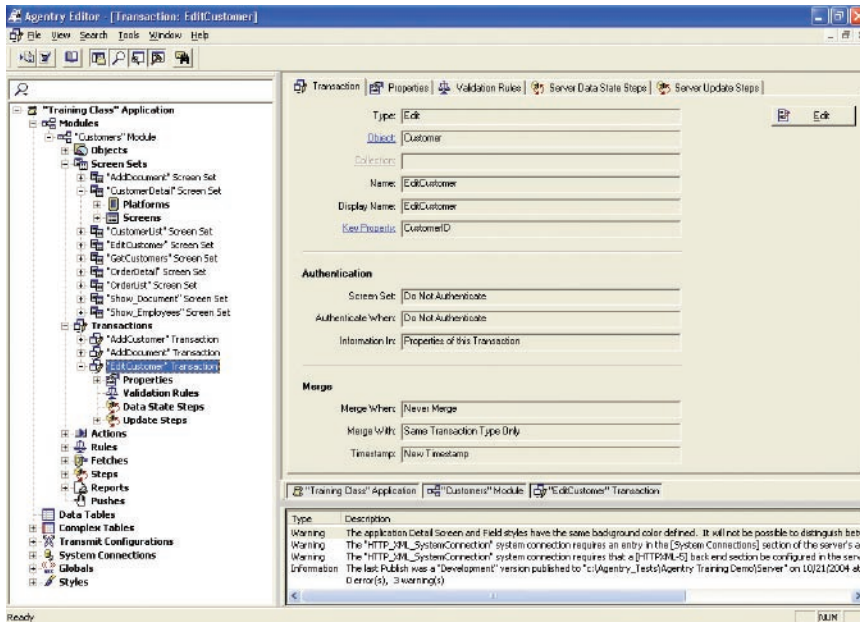
- Download a list of parts.
- Enter physical counts.
- Enter parts not included on the download list.
- Add new bins or storerooms.
- Update or reconcile physical counts in the system.

Issues and Transfers

- Issue a part from inventory.
- Return a part to the storeroom.
- Transfer a part from one storeroom to another.

Apply the latest mobile technologies, including GIS, GPS, digital image capture, RFID, e-signature and more. SMART Inventory allows technicians to stay productive in and out of wireless coverage.

FULLY CONFIGURABLE



Configure SMART Inventory Manager to meet your specifications. Set screens, user-defined fields and business rules with the easy-to-use Editor.

Purchase Orders and Receiving

- Download a list of purchase orders.
- Display line items for a selected purchase order.
- Enter receiving information for each line item.
- Accept all items on a single purchase order.

SMART Mobile Suite

Syclo's SMART Mobile Suite is a comprehensive family of prepackaged and preintegrated applications all designed to increase productivity, improve data accuracy, automate workflow and significantly lower operating costs. Products include Work Manager, Inventory Manager, Auditor, Inspections, Rounds, Schedule and more. Companies can maximize their investment in mobile technology by deploying multiple SMART products across functions.



Syclo's flagship Agency™ platform provides the flexibility and agility that organizations need to design, develop and deploy customized solutions quickly and cost-effectively. Completely configurable and future-proof, the service-oriented architecture seamlessly integrates with existing systems and supports a variety of languages, peripherals and networks for real-time wireless or offline computing.

ABOUT SYCLO

Since 1995, Syclo has helped more than 800 organizations across industries leverage mobile technology to streamline workflow and improve productivity. Syclo's solutions make data collection and decision making faster, easier and more reliable — reducing costs and driving more value from enterprise systems. Together, Syclo's Agency™ platform and SMART Mobile Suite products help companies gain a real-time, 360-degree view of operations to support ongoing growth and profitability.



Syclo LLC

1721 Moon Lake Boulevard | Suite 300
Hoffman Estates, IL 60169
800.567.9256 toll free | info@syclo.com
www.syclo.com

Syclo International Limited | Europe, Middle East & Africa
Fetcham Park House, Lower Road, Fetcham,
Leatherhead, Surrey, KT22 9HD, United Kingdom
+44 (0) 1372 371031 phone | +44 (0) 1372 371032 fax