

IMPROVE THE SPEED AND ACCURACY OF DATA COLLECTION, MAKING PROBLEMS AND NEEDS MORE IDENTIFIABLE



SMART Rounds

Automate the tedious yet critical function of conducting rounds by arming technicians and inspectors with hand-held computers to capture equipment conditions and measurement points. With more timely and accurate data collected and reported, management can isolate problem assets, streamline operating procedures and improve overall quality assurance (QA).

SMART Rounds gives technicians and managers the ability to access data for smarter decision making. Technicians can view recent readings in the field to assess measurement patterns and check safe-range details at the point of performance to more accurately evaluate equipment status and recognize problems. Managers can then quickly download data for further analysis or maintenance scheduling.

BUSINESS BENEFITS

- Speed data collection during rounds.
- Isolate problems before failure.
- Execute visual condition monitoring.
- Extend asset life and performance.

INCREASE PRODUCTIVITY DURING DATA COLLECTION

Automate the collection of readings from multiple rounds and condition-monitoring activities. Eliminate time-consuming paperwork, excessive labor costs and data-entry delays and errors. Complete more data rounds and inspections, and capture more data for better resource deployment.

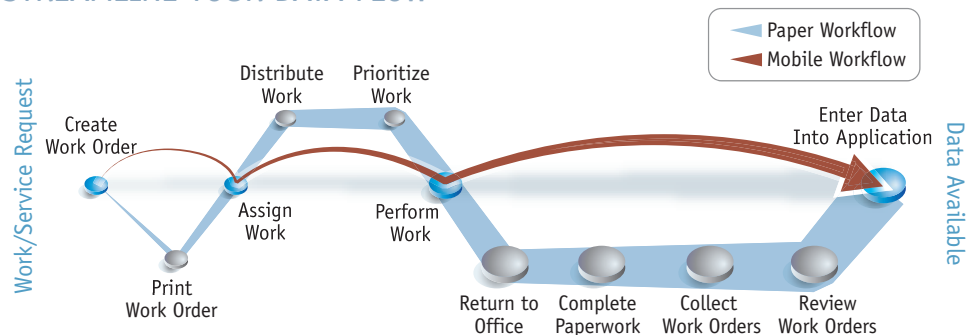
IMPROVE RESPONSE TIME

With SMART Rounds, technicians in the field can view acceptable operating ranges for selected assets. The technicians can then tag assets with out-of-range readings for management review or generate a work request on the spot. Rapid generation of work requests keeps vital equipment operating.

ENHANCE MAINTENANCE AND REPORTING

Use data collected to execute reliability-based preventive maintenance (PM) programs that extend asset life. Use timely and accurate data to generate internal QA or regulatory agency reports.

STREAMLINE YOUR DATA FLOW



The SMART Mobile Suite of out-of-the-box solutions enables your organization to quickly reach a new level of efficiency — significantly affecting the bottom line and lowering the total cost of ownership.

FEATURES AND FUNCTIONS

Downloading of Rounds and Measure Points

- Handle up to 10 rounds at a time.
- Download by equipment or name of the round.

Viewing Options for Measure Points

- View readings, units of measure, round numbers and IDs of equipment and measure points.

Round Details

- View safe-range details.
- Access information and the long description of measure points.



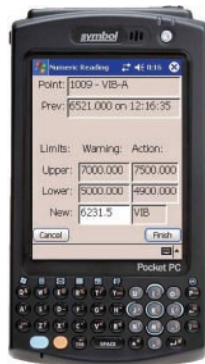
SMART Rounds works in and out of wireless coverage.

Access to History

- View recent readings — including date, time, reader ID and observations — taken at a given measure point.

In-field Generation of Work Requests

- Use a drop-down box to quickly select common repair descriptions.
- Add additional comments with an easy-to-use free form.



Placing safe-range details in the hands of technicians allows for rapid generation of work requests while keeping vital equipment producing.

SMART Mobile Suite

Syclo's SMART Mobile Suite is a comprehensive family of prepackaged and preintegrated applications all designed to increase productivity, improve data accuracy, automate workflow and significantly lower operating costs. Products include Work Manager, Inventory Manager, Auditor, Inspections, Rounds, Schedule and more. Companies can maximize their investment in mobile technology by deploying multiple SMART products across functions.

AGENTRY MOBILE PLATFORM

Syclo's flagship Agentry™ platform provides the flexibility and agility that organizations need to design, develop and deploy customized solutions quickly and cost-effectively. Completely configurable and future-proof, the service-oriented architecture seamlessly integrates with existing systems and supports a variety of languages, peripherals and networks for real-time wireless or offline computing.

ABOUT SYCLO

Since 1995, Syclo has helped more than 800 organizations across industries leverage mobile technology to streamline workflow and improve productivity. Syclo's solutions make data collection and decision making faster, easier and more reliable — reducing costs and driving more value from enterprise systems. Together, Syclo's Agentry™ platform and SMART Mobile Suite products help companies gain a real-time, 360-degree view of operations to support ongoing growth and profitability.



Syclo LLC

1721 Moon Lake Boulevard | Suite 300
 Hoffman Estates, IL 60169
 800.567.9256 toll free | info@syclo.com
 www.syclo.com

Syclo International Limited | Europe, Middle East & Africa
 Fetcham Park House, Lower Road, Fetcham,
 Leatherhead, Surrey, KT22 9HD, United Kingdom
 +44 (0) 1372 371031 phone | +44 (0) 1372 371032 fax